



6.25c redbacked cutworm; larva.



6.26 White grubs; larvae.



7.1a Bacterial leaf spot; rusty brown lesions with halos.



7.1b Bacterial leaf spot; leaf lesions and chlorosis.



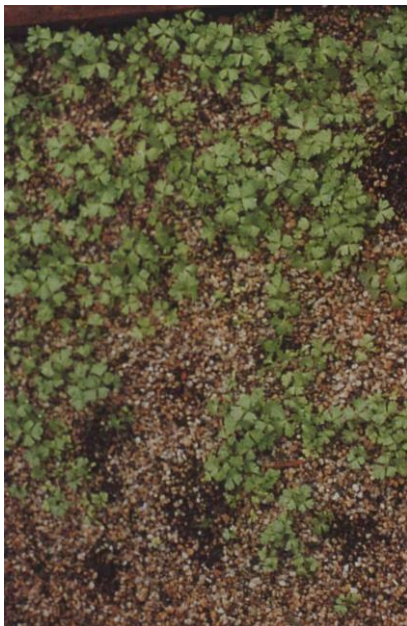
7.2 Brown spot; lesions on the inner surface of petioles.



7.3a *Cercospora* blight; lesions on celery leaves.



7.3b *Cercospora* blight; moderately severe symptoms on celery.



7.4 Damping-off; note missing plants at front of flat.



7.5a Fusarium yellows; chlorosis of outer leaves of celery.



7.5b Fusarium yellows; leaf dieback on celery plants.



7.5c Fusarium yellows; reddish-brown discoloration of internal crown tissue.



7.6a Pink rot; lesions on celery petioles.



7.6b Pink rot; lesion showing characteristic pinkish color.



7.7a Septoria blight; lesions on celery foliage.



7.7b Septoria blight; coalescing lesions on underside of leaflet.



7.7c Septoria blight; lesions on celery petioles.



7.7d Septoria blight; pycnidia in lesions on celery petioles.



7.7e Septoria blight; pycnidia in lesion (enlarged).



7.7f Septoria blight; pycnidia with cirri of spores.



7.7g Septoria blight; conidia of *Septoria apiicola*.



7.8a Aster yellows; foliar symptoms on celery.



7.8b Aster yellows; proliferation of shoots at the crown.



7.9a Heart mosaic; characteristic elongate, brownish spots on celery petioles.



7.9b Heart mosaic; mosaic and crinkling symptoms on a celery leaf.



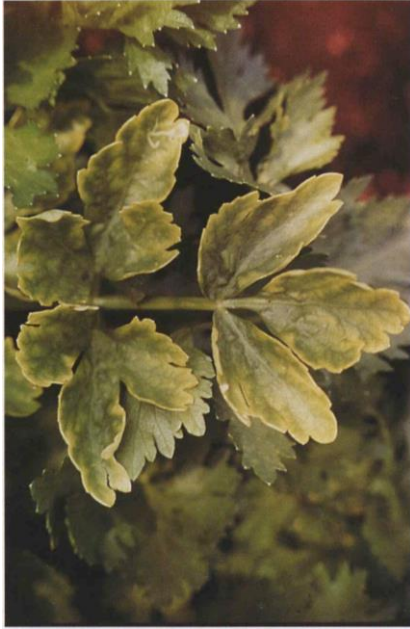
7.9c Heart mosaic; necrosis of celery petioles.



7.10a Blackheart; affected celery plant.



7.10b Blackheart; leaf symptoms on celery.



7.11 Chlorosis; magnesium deficiency symptoms on a celery leaf.



7.12a Cracked stem; symptoms on celery.



7.12b Cracked stem; internal breakdown in celeriac.



7.13 Spongy petiole; affected celery petioles.



7.15a Northern root-knot nematode; stunted celery plant with galls on roots.



7.15b Northern root-knot nematode; galls on roots.



7.20 Carrot weevil; severe root and crown injury to a celery plant.



7.21a Tarnished plant bug; feeding injury on a celery petiole.



7.21b Tarnished plant bug; a feeding nymph.



7.21c Tarnished plant bug; sequence of inner petioles showing breakdown from feeding injury.



7.21d Tarnished plant bug; adult (right), length 5-6 mm; and young nymph.



7.21e Tarnished plant bug; adult, pale specimen; length 5-6 mm.



7.22a Celery looper; lateral line narrower than in cabbage looper; actual size 28 mm.



7.22b Celery stalkworm; larva; actual size 25 mm.



8.1a Bacterial leaf spot (peppery leaf spot); lesions on Brussels sprouts.