



10.15b Carrot rust fly; larval feeding damage on parsley roots.



10.15c European earwig; severe defoliation of young parsley.



11.1a Head rot; breakdown of the youngest leaves in lettuce head.



11.1b Slime rot; decay of a lettuce head caused by *Erwinia carotovora*.



11.3a *Pseudomonas* diseases; brown rot lesions (individual spots) on lettuce.



11.3b *Pseudomonas* diseases; marginal leaf spot of lettuce caused by *Pseudomonas fluorescens*.



11.3c *Pseudomonas* diseases; brown rot lesions on lettuce.



11.3d *Pseudomonas* diseases; petiole rot of lettuce.



11.4 Anthracnose; lesions on lettuce leaves.



11.5 Black root rot; lesions on chicory roots.



11.6a Bottom rot; basal decay on lettuce.



11.6b Bottom rot; severe decay of lettuce petiole.



11.7a Damping-off; wilted lettuce seedlings.



11.7b Stunt; lettuce plants killed by *Pythium* sp.



11.7c Stunt; discoloration of crown tissue of lettuce caused by *Pythium* sp.



11.8a Downy mildew; sporulation of *Bremia lactucae* on lettuce leaf.



11.8b Downy mildew; a severely affected lettuce leaf.



11.9a Drop; lettuce plant infected by *Sclerotinia minor*.



11.9b Drop; lettuce infected by *Sclerotinia sclerotiorum*; note white mycelium and large black sclerotia.



11.9c Drop; stem infection on lettuce.



11.9d Drop; lettuce infected by *Sclerotinia minor*; note small black sclerotia at base of plant.



11.9e Drop; aggregated sclerotia and apothecia of *Sclerotinia minor*.



11.9f Drop (white mold); severely decayed chicory roots from storage; note white mycelium and black sclerotia.



11.10a Gray mold; crown decay of iceberg lettuce head.



11.10b Gray mold; head infection of butterhead (Boston) lettuce.



11.10c Gray mold; basal stem infection of lettuce; note gray growth of *Botrytis cinerea* on petioles.



11.10d Gray mold; black sclerotia of *Botrytis cinerea* on dead lettuce tissue.



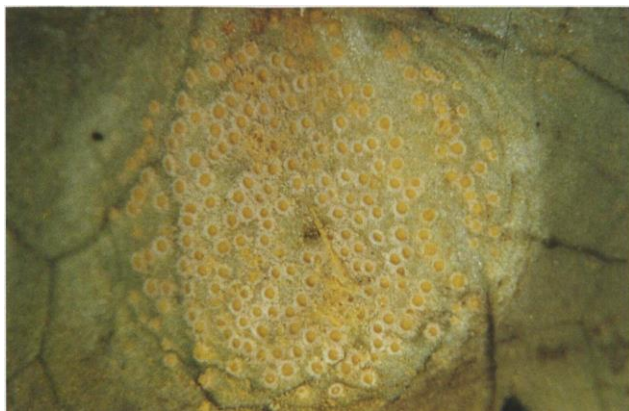
11.10e Gray mold; root rot of lettuce.



11.10f Gray mold; conidia of *Botrytis cinerea* on lettuce leaf.



11.13a Rust; lesions on lettuce leaf.



11.13b Rust; close-up of aecia of *Puccinia dioicae* on lettuce.



11.15a Aster yellows; chlorosis and bronzing of lettuce leaves.



11.15b Aster yellows; affected (left) and healthy lettuce plants.



11.16 Big vein; an affected lettuce leaf.



11.17a Lettuce mosaic; an affected lettuce plant.



11.17b Lettuce mosaic; mosaic pattern on an affected lettuce leaf.



11.19a Manganese deficiency; lettuce appears stunted, yellow-gray, with necrotic spots on leaf margins.



11.19b Manganese toxicity; chlorosis on Romaine lettuce leaves.



11.19c Tipburn; symptoms on the inner leaves of lettuce head.



11.20 Pink rib and russet spot (small pits); severely affected lettuce head.



11.23a Aster leafhopper; adult; length ± 3 mm.



11.23b Aster leafhopper; adult, showing diagnostic head spotting.



11.26 Redbacked cutworm; curled larva and its feeding injury on lettuce.



11.27a Black slug; side view (contracted), scale in cm; length up to 150 mm.



11.27b Spotted garden slug; scale in inches; length ≥ 100 mm.



11.27c Gray garden slug; juvenile with severe feeding damage on dill; length 35-50 mm.



12.1a Stewart's wilt; pale green streaks on leaves later turn brown.