



**9.1a** Angular leaf spot; moderately severe infection of cucumber.



**9.1b** Angular leaf spot; lesions and shot-holes on cucumber leaf.



**9.2a** Bacterial wilt; wilted cucumber plants.



**9.2b** Bacterial wilt; wilted cucumber vine.



**9.3a** Anthracnose; lesions on a muskmelon vine and leaves.



**9.3b** Anthracnose; extensive chlorosis and necrosis of cucumber foliage.



**9.3c** Anthracnose; lesions on muskmelon fruit.



**9.5** Fusarium foot rot; severely affected muskmelon plant.



**9.6a** Fusarium wilt; affected (chlorotic) muskmelon plant.





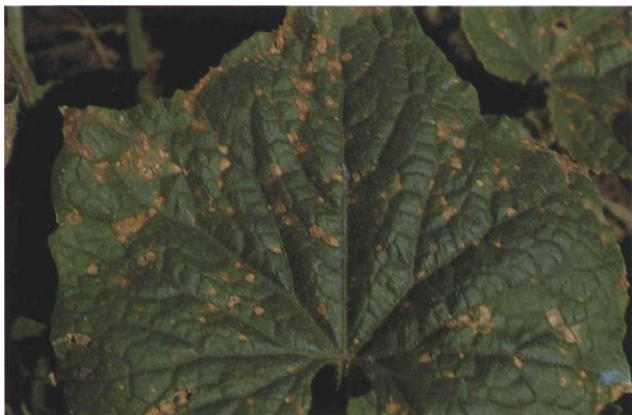
**9.6b** Fusarium wilt; healthy (left and foreground) and diseased muskmelon plants.



**9.7** Gray mold; sporulation of *Botrytis cinerea* on infected cucumber fruit.



**9.8a** Alternaria leaf blight; lesions on cucumber leaf.



**9.8b** *Ulocladium* leaf spot; an affected cucumber leaf.



**9.10** Powdery mildew; whitish, talc-like lesions on squash foliage.



**9.13** Scab; lesions on cucumber fruit; see also 22.16.



**9.14a** White mold; stem rot of pumpkin.



**9.14b** White mold; cucumber fruit with mycelium and sclerotia of *Sclerotinia sclerotiorum*.



**9.14c** White mold; affected pumpkin fruit.





**9.15** Cucumber mosaic; severe distortion and mosaic of zucchini leaves.



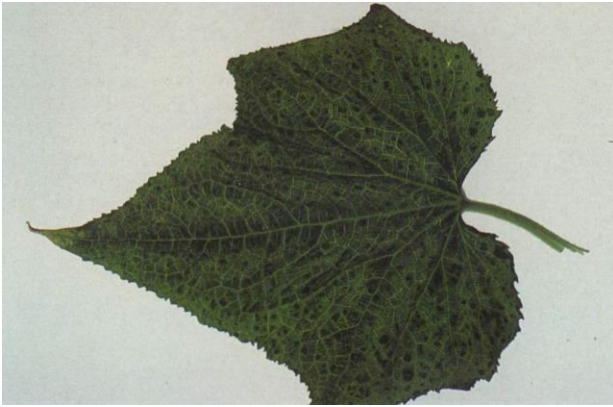
**9.16a** Zucchini yellow mosaic; distorted cucumber leaf.



**9.16b** Zucchini yellow mosaic; distorted cucumber fruit.



**9.16c** Zucchini yellow mosaic; slight malformation of squash infected by ZYMV.



**9.17a** Watermelon mosaic; mosaic symptoms of strain 2 virus infection on cucumber.



**9.17b** Watermelon mosaic; prominent etching and upward cupping of cucumber leaves.

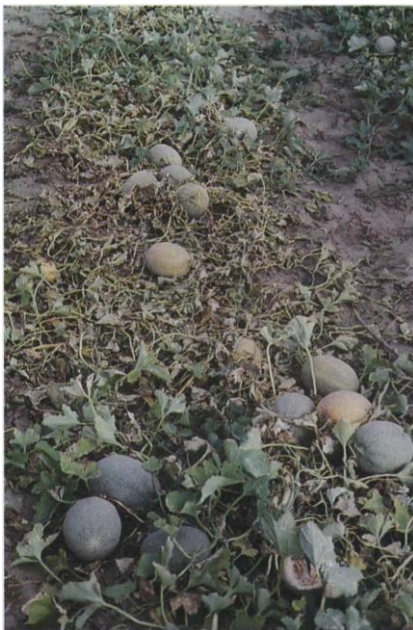




**9.18a** Cold injury; frost damage to a young cucumber plant.



**9.18b** Cold injury; necrosis on the cotyledons and leaves of a cucumber seedling.



**9.18c** Cold injury; frost damage on melon plants.



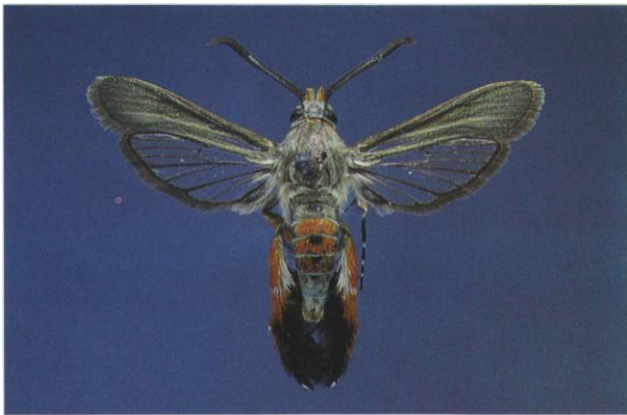
**9.21** Cucumber beetles; adults, spotted (top) and striped; length 6-7 mm.



**9.22a** Seedcorn maggot; larva inside cucumber stem.



**9.22b** Seedcorn maggot; wilted cucumber seedling.



**9.22c** Squash vine borer; adult; wingspan 30-34 mm.



**10.2** Downy mildew of hop; infected (chlorotic) shoots.