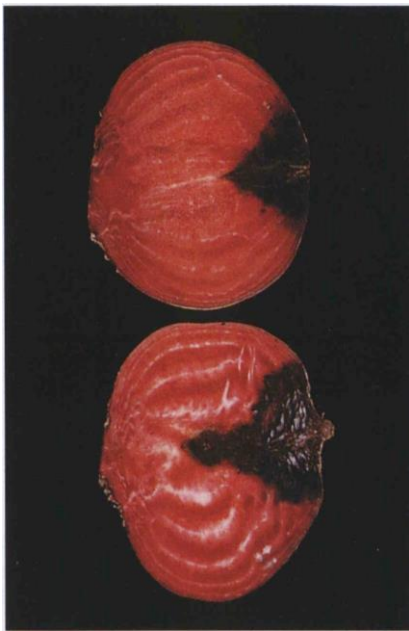
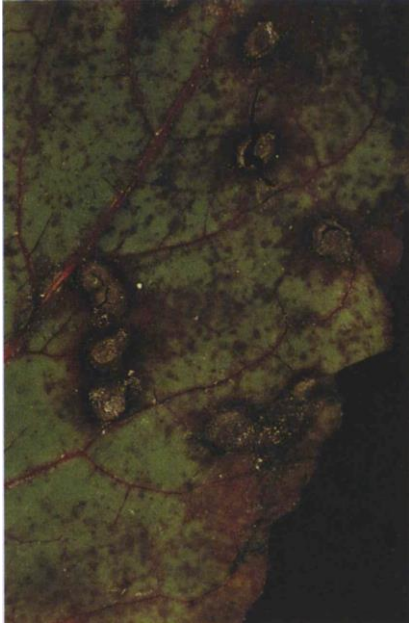




5.1 Scab; raised, corky lesions on a red beet root.



5.2 Aphanomyces root rot; red beet root with black decay progressing inward from the tip.



5.3 *Cercospora* leaf spot; lesions with purplish halo and brittle, gray centers.



5.4a Downy mildew; severely affected spinach.



**5.4b** Downy mildew; chlorotic lesion (below), purple sporulation on lower surface of leaf.



**5.5a** Fusarium wilt; discoloration of spinach root.



5.5b Fusarium wilt; range of symptoms on spinach seedlings.



5.5c Fusarium wilt; diseased (left) and healthy spinach plants.



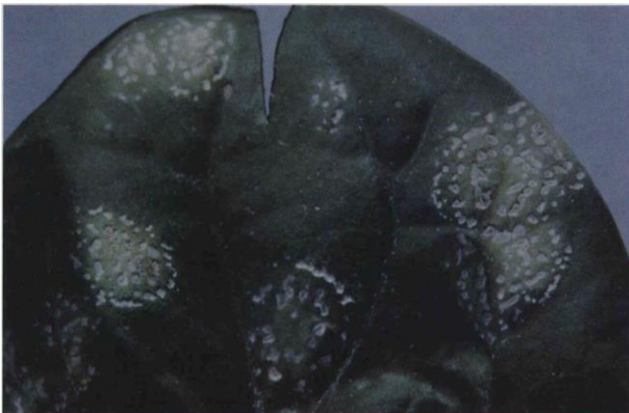
5.5d Fusarium wilt; discolored spinach seed infested with *Fusarium oxysporum* f. sp. *spinaciae*.



**5.8a** *Rhizoctonia* root rot; wilting and necrosis (browning) of foliage of red beet.



**5.8b** *Rhizoctonia* root rot; dry rot lesions on red beet root.



**5.9** White rust; sori (white pustules) on a spinach leaf.



**5.10** Spinach blight; yellowing, mottling and stunting of red beet seedlings.



**5.14a** Sugarbeet cyst nematode; infested (foreground) and healthy sugar beet crop.



**5.14b** Sugarbeet cyst nematode; red table beet roots with white immature females.



5.15 Beet leafhopper; adult; length  $\pm 3$  mm.



5.16 Redheaded fleabeetle; adult; length 4-5 mm.



5.17a Beet webworm; larvae.



5.17b Beet webworm; left to right: spin-up, opened spin-up, pupa.





*5.17c* Beet webworm; adult moth; wingspan  $\pm$  25 mm.



*5.17d* Beet leafminer; adult fly; length 6.0-6.5 mm.



**5.17e** Leafminer; damaged (mined) beet leaves.



**5.17f** Leafminer; damage to Swiss chard leaf.



**6.1a** Bacterial leaf blight; droplets of bacterial exudate on carrot umbel.