



3.13 Weed management; herbicide injury (leaf burn) to pea seedlings from atrazine residue in soil.



4.1a Botrytis blight; infection of lower canopy of asparagus ferns.



4.1b Botrytis blight; sporulation in the center of lesions on a fern stem.



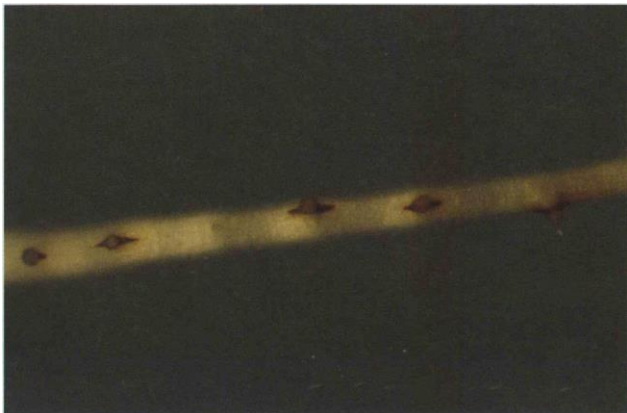
4.2c Fusarium crown and root rot; decayed cortex and brown vascular bundles.



4.2a Fusarium crown and root rot; yellowing of infected ferns.



4.2b Fusarium crown and root rot; wilting of infected ferns.



4.2d Fusarium crown and root rot; seedling root showing lesions at sites of emergence of lateral roots.



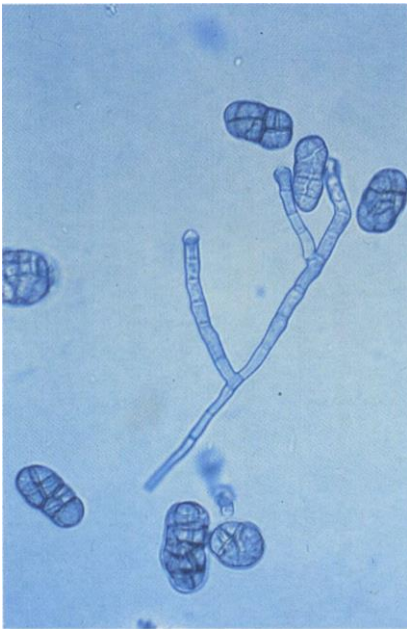
4.2e Fusarium crown and root rot; cross section of symptomless (left) and infected (brownish decay) crowns.



4.5a Purple spot; lesions at base of spear.



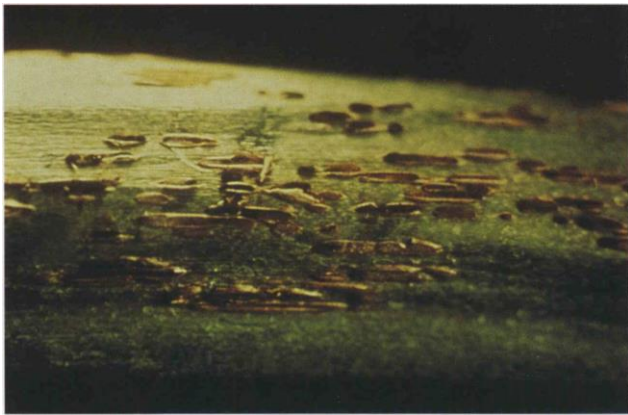
4.5b Purple spot; stem lesions.



4.5c Purple spot; spores of *Stemphylium vesicarium*.



4.6a Rust; aecial lesion on a fern stem.



4.6b Rust; lesions with urediniospores (reddish-brown) and teliospores (black).



4.8 Cold injury; stunting, curvature and purpling of spears early in the growing season.



4.9 Asparagus aphid; nymphs.



4.10a Asparagus beetle; adult; length 6-7 mm.



4.10b Asparagus beetle; larva.



4.10c Spotted asparagus beetle; adult; length 6-7 mm.



4.10d Spotted asparagus beetle; adults feeding on fern.



4.10e Asparagus beetle; adult and eggs on fern.