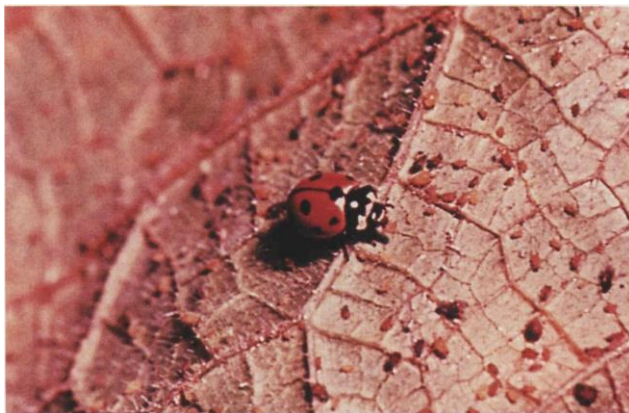




**2.3q** Clockwise from top: lamb's-quarters, shepherd's-purse, red- root pigweed, purslane.



**3.7a** Ground beetle (carabid); larvae beneficial, adults may damage small fruits; 4-12 mm.



**3.7b** Lady beetle; adult; both adults and larvae are predators on aphids.



3.7c Lady beetle; pupa on asparagus fern.



3.7d Green lacewing; larva feeding on an aphid (at top).



3.7e Green lacewing; adult and larva among aphids.



3.7f Hover fly; adult on flower.



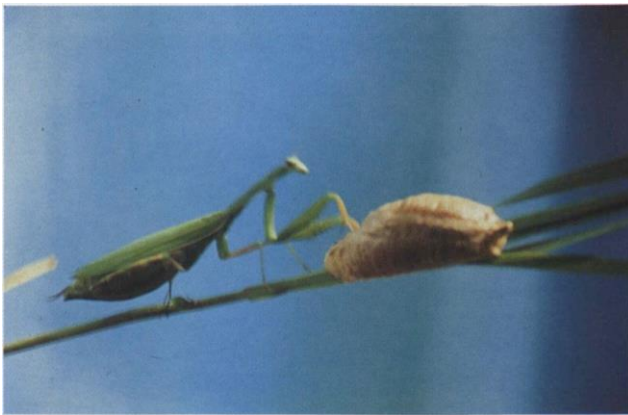
3.7g Hover fly; larva on corn leaf.



3.7h Hover fly; larva.



**3.7i** Predatory midge (cecidomyiid); larvae (brownish) feeding on aphids on cabbage.



**3.7j** Praying mantis; a non-selective predator, adult and its egg mass.



**3.7k** Predatory stink bug; nymph attacking Colorado potato beetle larva.



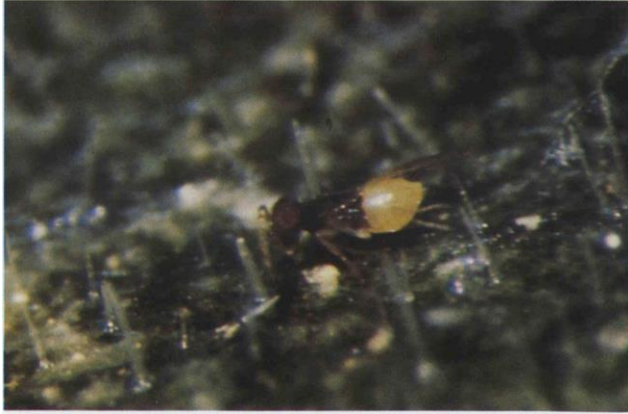
**3.7m** Predatory stink bug; adult attacking Colorado potato beetle larva.



**3.7n** Predatory wasp (vespid); adult attacking a bee.



**3.7p** Parasitic wasp (chalcid); adults emerging from pupa of an imported cabbageworm.



3.7q *Encarsia formosa*; wasp parasite of greenhouse whitefly.



3.7r Parasitic wasp (braconid); cocoons on back of hornworm larva.



3.7s *Aphidius* sp.; a braconid wasp parasite of aphids.



3.7t Sticky trap for thrips; blue is preferred because it is less attractive than yellow to parasitic wasps.



3.7u Parasitic wasp (braconid); larvae of *Macrocentrus* sp. emerging from a potato stem borer larva.



3.7v Parasitic fly (tachinid); adult emerged from pupa, and host European corn borer larva.



3.7w Greenhouse whitefly; pupae infected with the pathogenic fungus *Aschersonia aleyrodis*.



3.7x Cabbage looper; larva killed by nuclear polyhedrosis virus.



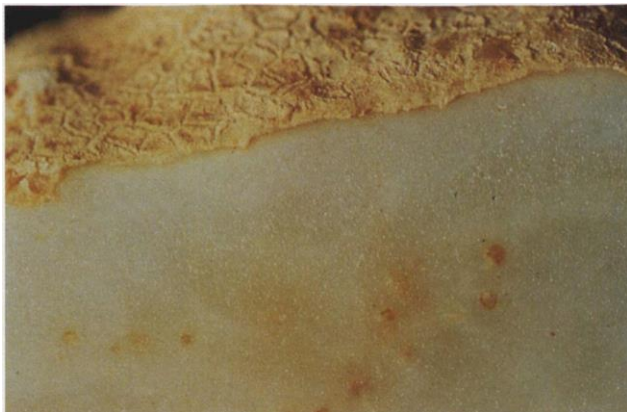
3.7y Cabbage looper; larval damage to untreated cabbage plants.



3.7z Cabbage looper; controlled with *Bacillus thuringiensis*, five applications.



3.10a Columbia root-knot nematode; galls on Russet Burbank potato tuber.



3.10b Columbia root-knot nematode; female nematodes and egg masses inside a potato tuber.



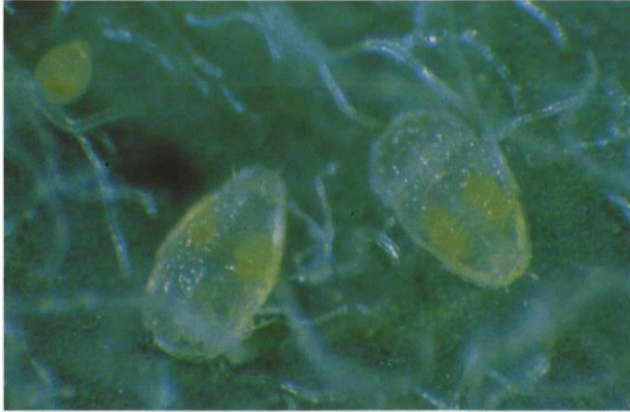
**3.10c** Potato tuberworm; larva tunneling in potato tuber.



**3.10d** Sweetpotato whitefly; adult and pupa.



**3.10e** Sweetpotato whitefly, adult (lower left); greenhouse whitefly, adult (right); note difference in angle of wings.



**3.10f** Sweetpotato whitefly; immature stages.



**3.10g** Sweetpotato whitefly; pupa parasitized by *Encarsia formosa*.



**3.10h** Tomato pinworm; larva on surface of a damaged tomato fruit.



**3.11a** Potato virus Y<sup>N</sup>; mosaic symptoms in tobacco.



**3.11b** Potato virus Y<sup>N</sup>; veinal necrosis symptom in tobacco.



**3.11c** Potato virus Y<sup>N</sup>; ground cherry (*Physalis* sp.), a reservoir host of PVY<sup>N</sup>.



**3.11d** Japanese beetle; adult resting on cinquefoil flower.



**3.11e** Brown garden snail; shell; width 32-38 mm. height 29-33 mm, number of whorls 4.0-4.5.



**3.12** Nematode management; cucumber affected by southern root- knot nematodes (left); plants in fumigated soil (right) are taller.



**3.13** Weed management; herbicide injury (leaf burn) to pea seedlings from atrazine residue in soil.



**4.1a** Botrytis blight; infection of lower canopy of asparagus ferns.