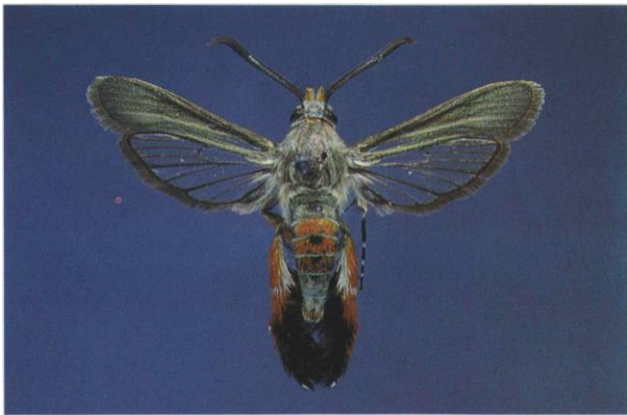




9.22b Seedcorn maggot; wilted cucumber seedling.



9.22c Squash vine borer; adult; wingspan 30-34 mm.



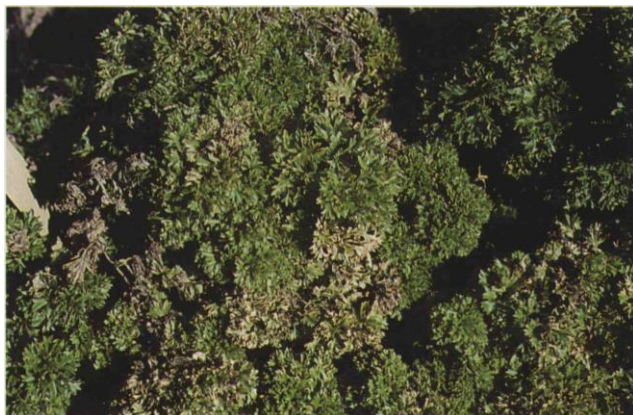
10.2 Downy mildew of hop; infected (chlorotic) shoots.



10.3a Leaf scorch of parsley; damping-off of scattered plants.



10.3b Leaf scorch of parsley; moderately affected plant.



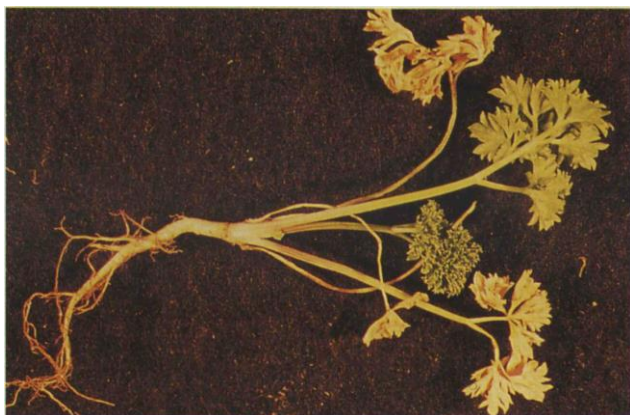
10.4 Septoria leaf spot; parsley plants showing foliar chlorosis and necrosis.



10.5 Powdery mildew; lesions on parsley leaf.



10.6a *Pythium* root rot; affected parsley plants showing yellowing of leaves.



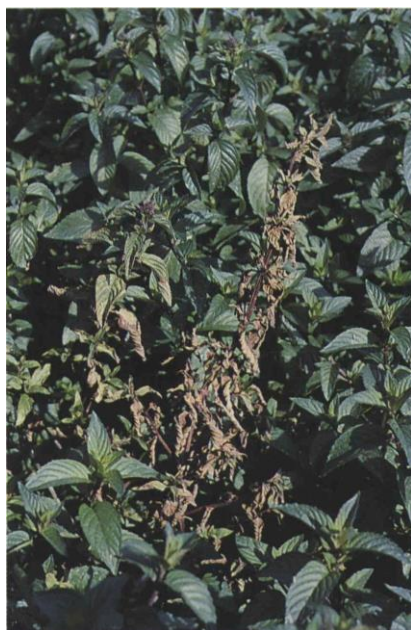
10.6b *Pythium* root rot; root rot of parsley.



10.7a Rust of mint; lesions on leaves of native spearmint.



10.7b Rust of mint; pustules on leaf of scotch spearmint.



10.9a Verticillium wilt; severe wilt and necrosis of peppermint.



10.9b Verticillium wilt; wilted shoots of hop.



10.9c Verticillium wilt; asymmetrical leaf growth of Scotch spearmint.



10.9d Verticillium wilt; chlorosis of young leaves of Scotch spearmint.



10.10a Phoma blight; lesions on dill umbel.



10.10b *Thielaviopsis* root rot; symptoms on fenugreek seedlings.



10.10c Root rot; dead tarragon plant.



10.11a Aster yellows; an affected (chlorotic) dill plant.



10.11b Aster yellows; dill umbel showing chlorotic, bunchy growth.



10.12 Carrot motley dwarf; severely affected parsley field.



10.14a Crucifer flea beetle; adult.



10.14b Crucifer flea beetle; severe injury from adult feeding.



10.15a Black swallowtail; intermediate larvae on dill.



10.15b Carrot rust fly; larval feeding damage on parsley roots.



10.15c European earwig; severe defoliation of young parsley.



11.1a Head rot; breakdown of the youngest leaves in lettuce head.