

## STEM AND BULB NEMATODE FOUND IN ERIEAU MARSH, KENT COUNTY, ONTARIO

P. W. Johnson and W. E. Kayler<sup>1</sup>

In Canada, the stem and bulb nematode, *Ditylenchus dipsaci* (Kuhn, 1857) Filipjev, 1936 was first reported on onion (*Allium cepa* L.) in the Point Pelee Marsh, Essex County, Ontario, by Mountain (1957). In a survey conducted the same year, Mountain (1957) confirmed the presence of *D. dipsaci* on 19 farms in that marsh.

During 1957-58, surveys for this pest were conducted in all onion growing areas of Ontario (Sayre and Mountain 1962). The nematode was not found in any area other than the Point Pelee Marsh.

Several cases of suspected nematode injury to onions in the Erieau Marsh have been reported over the past few years. In 1971 the presence of *D. dipsaci* was confirmed, and severe splitting and cracking of infested bulbs (Fig. 1) was evident. Thus, the nematode has now been positively identified in a second onion growing area of Ontario. Several other fields in the Erieau Marsh are suspected to contain *D. dipsaci*, but this has not been confirmed.

The nematode has apparently been present in this marsh for several years. Imported sets are suspected as being the medium for the nematode introduction. The major onion growing areas in Ontario including those known to be infested with *D. dipsaci*, are shown in Fig. 2.

### Literature cited

1. Mountain, W.B. 1957. Outbreak of the bulb and stem nematode in Ontario. Pages 61-62 in R.A. Shoemaker and D.W. Creelman, compilers. 37th Annu. Rep. Can. Plant Dis. Surv.
2. Sayre, R.M., and W.B. Mountain. 1962. The bulb and stem nematode in Ontario. *Phytopathology* 52:510-516.

<sup>1</sup> Nematologist, Research Station, Canada Department of Agriculture, Harrow, Ontario; and Extension Horticulturist (Vegetable Crops), Ontario Ministry of Agriculture and Food, Harrow, Ontario.

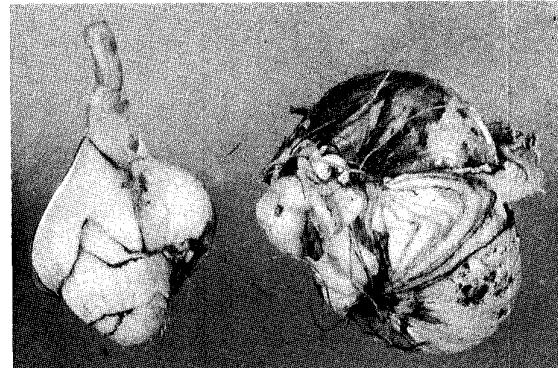


Figure 1. Onion bulbs infested with *Ditylenchus dipsaci*, from the Erieau Marsh; note severe cracking and splitting.

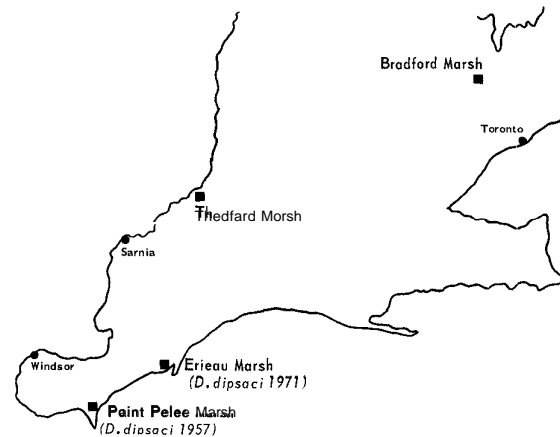


Figure 2. Location of the four major onion growing areas in Ontario, including those known to be infested with *Ditylenchus dipsaci*.